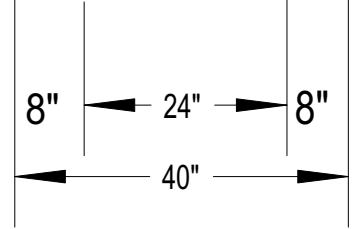
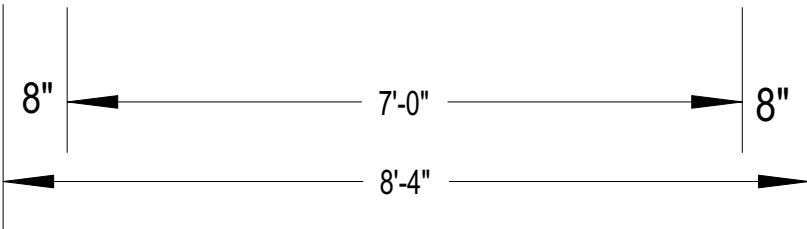
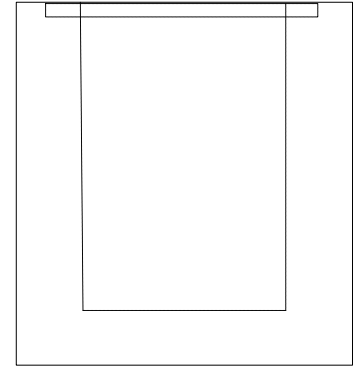
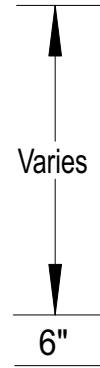
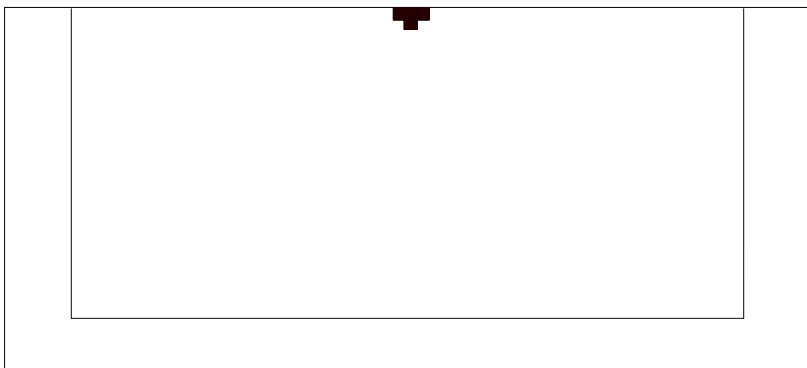
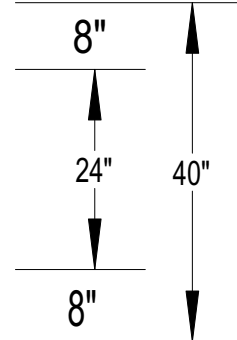
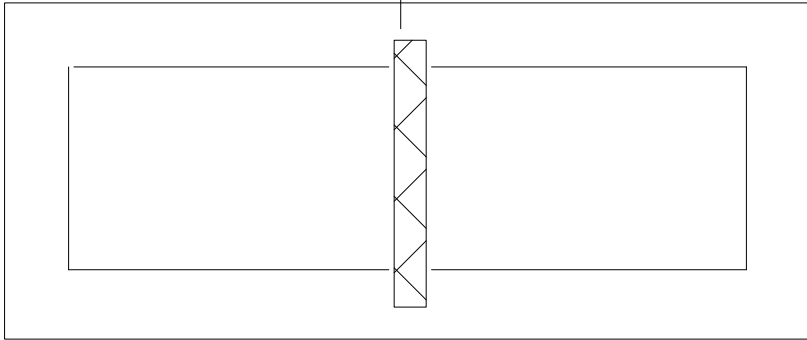


Steel Railroad Beam



Notes:

Reinforce With: #4 @ 9" O.C.E.W. Walls & Bottom.

Weight= 7700 lbs. (43" Depth)

All Area Inlets Are Made To Order For Your Job.

We Need To Know The Size, Location, & Invert Of Your Outlet Holes.

Takes Double # 13 Or # 16 Grate & Frame.

HS-20 Loading

Model # 1485

Copeland Enterprises Inc.
 904 South Lipan
 Denver, CO 80223

Double #13 Or #16 Area Inlet

No Scale Drawing Page 34